



Performance Management in Multi-Contractor Environments



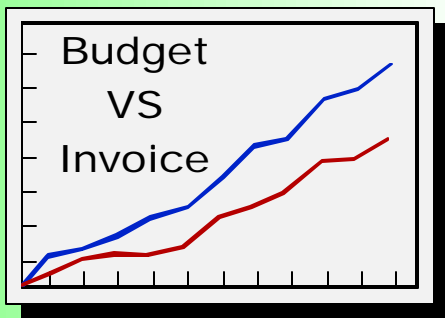


Introduction

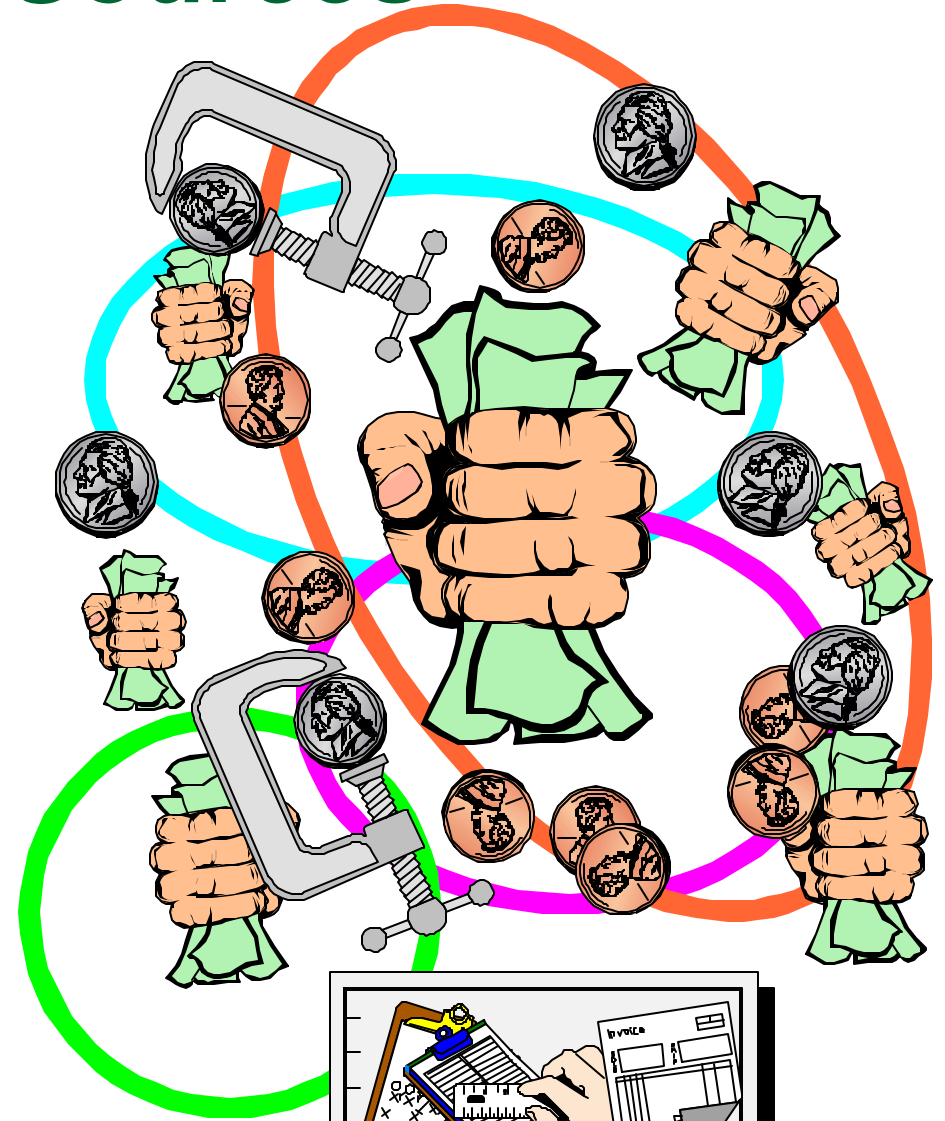
- Funding Sources
- Traditional Accounting
- TeamMetrix Differentiators
- Real-Time TeamMetrix Solution
- Collaborative Work Environment
- Common Web Interface
- Output and Reports
- Administration
- System Requirements
- Contacts
- Appendix
(Sample Requirement)



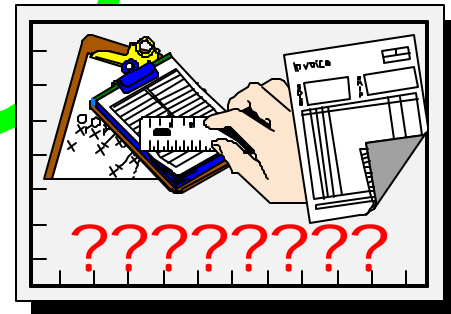
Funding Sources



Yesterday

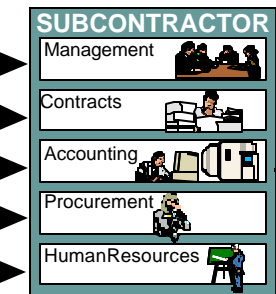
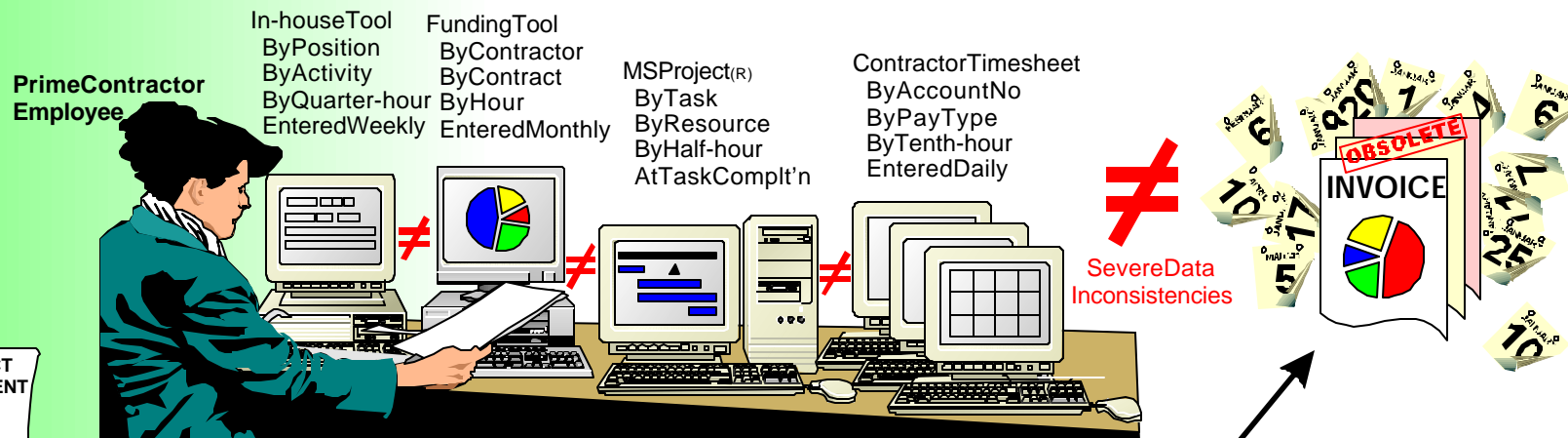


Today





Traditional Control



66 Days (Best-Case)



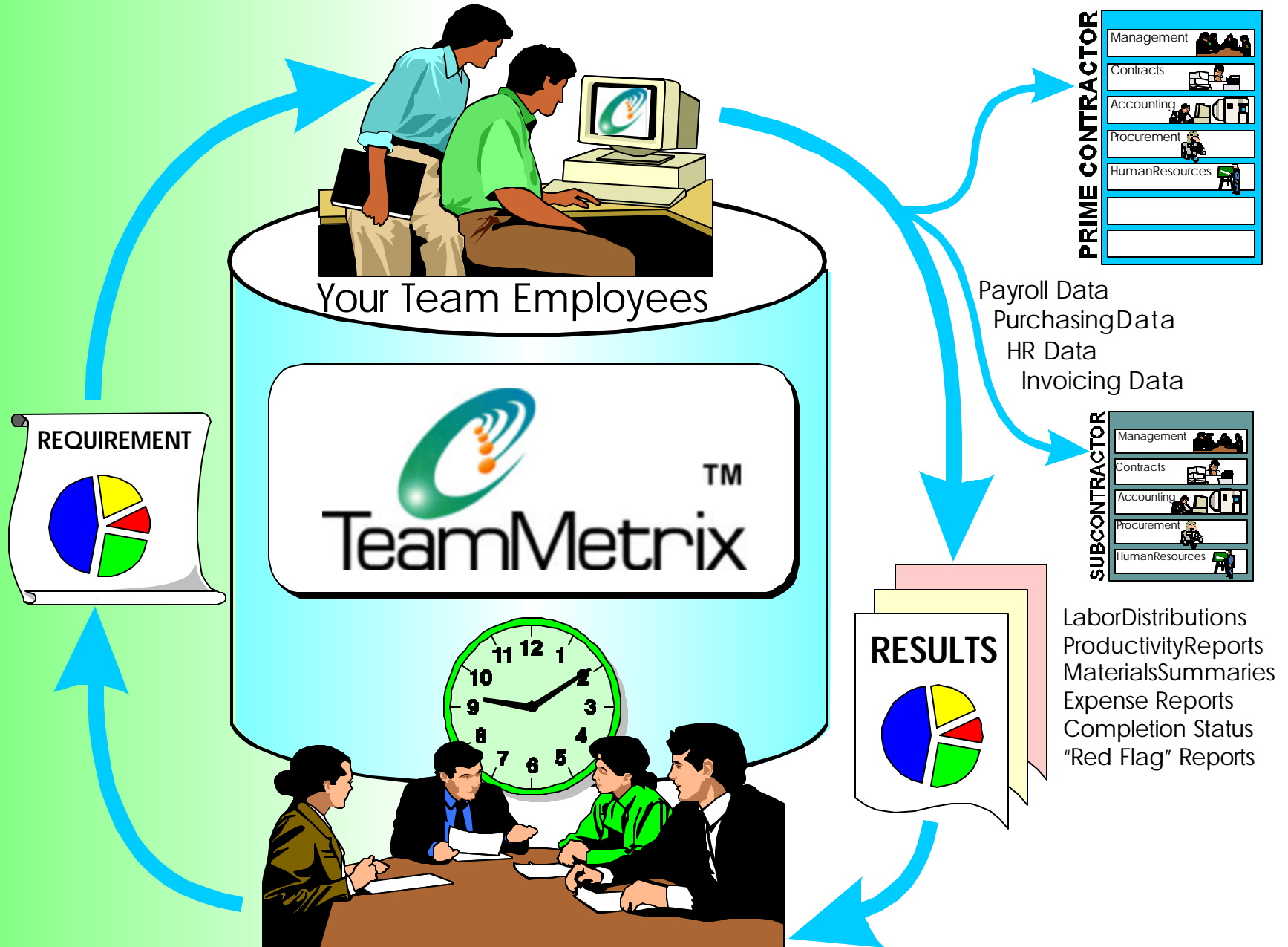
TeamMetrix™ Differentiators

CRITERIA	TeamMetrix™	Commercial/Corporate Accounting System	In-House Program Control Database	In-House Accounting System	Project/Scheduling Tool
WebEnabled	●	◐	◐	◐	◐
DesignedforSecureNetworks	●	○	●	◐	○
SimultaneousContractTypeSupport(T&M, CostPlus, Firm FixedPrice)	●	◐	○	◐	○
Supportfor multiplecorporaterulesetsinsingle database/instance	●	○	○	○	○
Real-time reportingwithout havingtowaitfor subcontractor/vendorpayroll, billingoraccountingclosing	●	○	●	◐	●
Designedasuniversalfront-endtocorporateaccounting systemsforsingle-point-of-entry	●	○	○	○	○
AuditedbyDCAA	●	●	○	◐	○
PurchasingandExpenseModules	●	●	○	◐	○
TaskModulew/MSPProject@interface	●	○	○	○	●
WebReportsfilterableanddistributabletoeachuser	●	○	○	○	○
Proprietary DataSegregation	●	◐	○	◐	○

- Complies
- ◐ Some Systems or Partial Compliance
- Does Not Comply

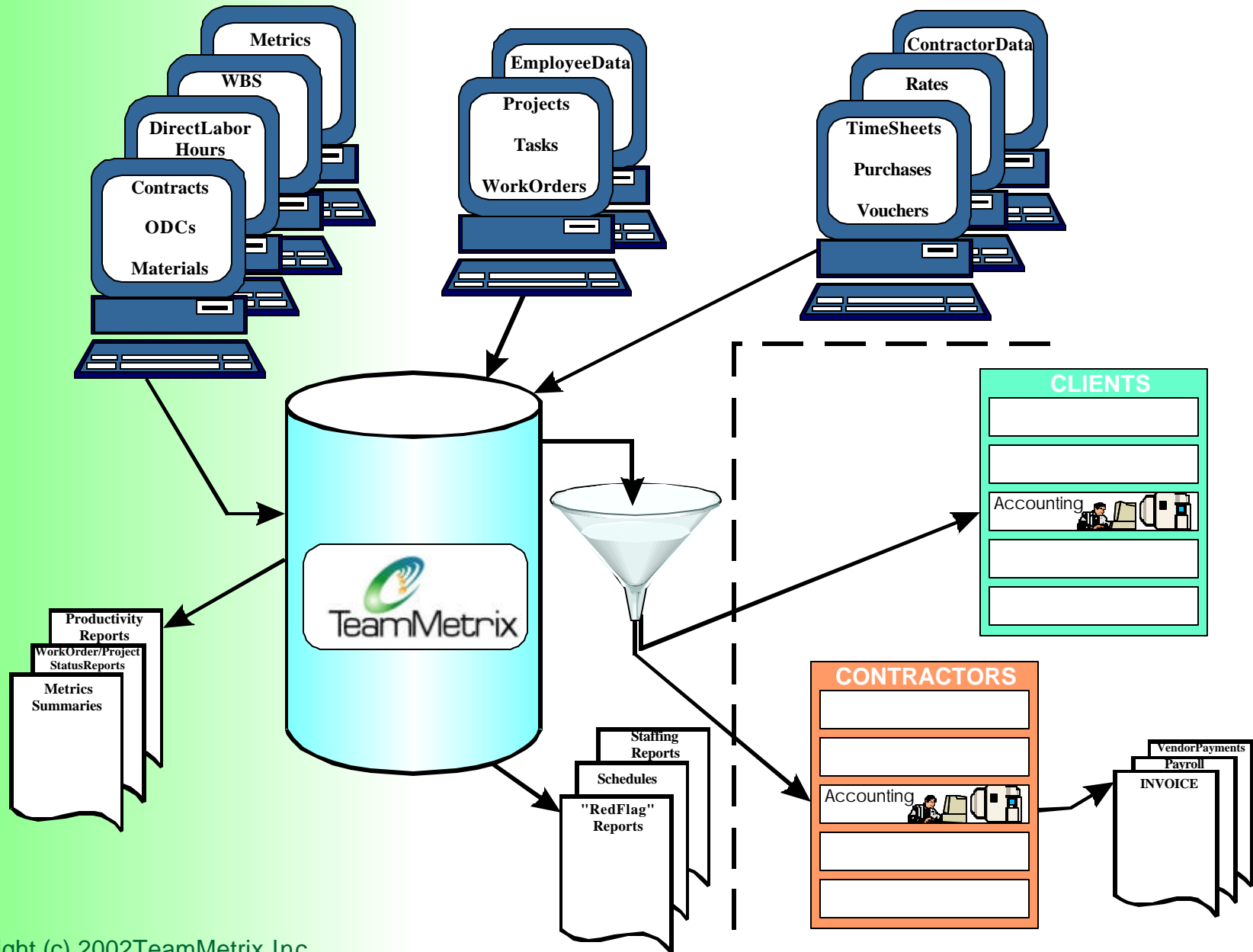


Real-Time Control with TeamMetric





Collaborative Work Environment





Common Web Interface

Welcome to TeamMetrix.com - Microsoft Internet Explorer

File Edit View Favorites Tools Help eSend

TeamMetrix

- Main Menu
- Admin
- User
- TimeSheet
- Approval
- Task
- Expenses
- Reports
- Help

Log Out

Timesheet List [Active]

Help Back Print New Submit Timesheet

User : Pay Period

From : To :

		Total by Date		
Date	Reg	OT		
Mon - 04/02/2001	8.00	0.00		
Tue - 04/03/2001	8.00	0.00		
Wed - 04/04/2001	8.00	0.00		
Thu - 04/05/2001	8.00	0.00		
Fri - 04/06/2001	8.00	0.00		
Mon - 04/09/2001	8.00	0.00		

Activity	Task	Date	Hours	Pay Type	Reg	OT	Flag	Notes
01.1.2.1.0 Ops Mgmt		04/02/2001	8	Regular	8	0		
03.1.1.2.0 Arch Dsgn & Reqs	01-00257 System Q9A Design	04/03/2001	6	Regular	6	0		
01.1.2.1.0 Ops Mgmt		04/03/2001	2	Regular	2	0		
03.1.1.2.0 Arch Dsgn & Reqs	01-00257 System Q9A Design	04/04/2001	8	Regular	8	0		
03.1.1.2.0 Arch Dsgn & Reqs	01-00257 System Q9A Design	04/05/2001	8	Regular	8	0		
99.1.03 Vacation		04/06/2001	8	Regular	8	0		
01.1.2.1.0 Ops Mgmt		04/09/2001	8	Regular	8	0		
01.1.2.1.0 Ops Mgmt		04/10/2001	8	Regular	8	0		
01.1.2.1.0 Ops Mgmt		04/11/2001	8	Regular	8	0		
01.1.2.1.0 Ops Mgmt		04/12/2001	8	Regular	8	0		

Internet



Output and Reports

Data and Reports in:

- * .HTML
- * .PDF
- * .DOC
- * .XLS

Real-time data for:

- Users
- Managers
- Clients
- Contractors

SELECTION CRITERIA:
Corporation = ALL
Modified = 12/1/2000 - 12/31/2000

ACCOUNT AUDIT REPORT

TeamMetric

Corporation	Account	Status	Activity	Task	Description	Contract	Type	Other Info	Modified By	Date Modified
Vaxcom Services, Inc.	866-832-836								Ellen R.	10/26/00 7:18:03AM
									Ellen R.	10/24/00 2:16:03AM
									Pat C.	10/18/00 4:36:42PM
									Ellen R.	10/24/00 7:17:06AM
									Pat C.	10/18/00 4:37:27PM
									Ellen R.	10/26/00 7:18:03AM
									Ellen R.	10/24/00 7:18:06AM
									Pat C.	10/18/00 4:11:42PM
									Ellen R.	10/26/00 7:17:54AM
									Ellen R.	10/26/00 2:17:54AM
									Ellen R.	10/26/00 7:18:03AM
									Ellen R.	10/26/00 7:18:03AM
									Ellen R.	10/26/00 7:18:06AM
									Ellen R.	10/26/00 7:18:16AM
									Ellen R.	10/26/00 7:18:16AM
									Ellen R.	10/26/00 11:51:16AM
									Ellen R.	10/26/00 11:51:16AM
									Pat C.	10/20/00 2:19:08PM
									Pat C.	10/20/00 2:19:10PM
									Pat C.	10/20/00 2:19:10PM
									Pat C.	10/20/00 2:19:10PM

SELECTION CRITERIA:
Dynamic Accounting Corporation = ALL
User = ALL
Period = 12/1/2000 - 12/31/2000

LABOR DISTRIBUTION ESTIMATE BY OBS, USER, WBS

TeamMetric

Organization	Name	Corporation	WBS	Labor Hours	
				Straight	Overtime
Internal Team					
Internal Team	Armbricht, Janice H.	VidCOM	01.1.5.A.0 Bus Mgmt & Adm'n	104.00	0.00
Armbricht Total				104.00	0.00
Internal Team	Bays, Duane V.	TeamMetric, Inc.	01.1.1.3.0 Dir,LOB Integ	89.00	0.00
Bays Total				89.00	0.00
Internal Team	Bergeron, Kevin P.	DOT	01.1.1.3.0 Dir,LOB Integ	104.00	0.00
Bergeron Total				104.00	0.00
Internal Team	Broering, Naomi C.	IBM	01.1.1.2.0 Arch Design & Req	40.00	0.00
Broering Total				40.00	0.00

VAXCOM SERVICES INC

Workload Management Record

TeamMetric 7427

EMPLOYEE	Wilson, William R.
ID	1001
PERIOD ENDING	April 15, 2001
BISS HOURS	80

Account	Contract	Task	Type	Sun 1	Mon 2	Tue 3	Wed 4	Thu 5	Fri 6	Sat 7	Sun 8	Mon 9	Tue 10	Wed 11	Thu 12	Fri 13	Sat 14	Sun 15	Total Regular Hours	Total Overtime Hours
2000	866-832	836			8.00	2.00						8.00	8.00	8.00	8.00	8.00		8.00	58.00	0.00
2000	050-555	772				6.00	8.00	8.00											22.00	0.00
VAC									8.00										8.00	0.00
TOTAL					8.00	8.00	8.00	8.00	8.00			8.00	8.00	8.00	8.00	8.00		8.00	88.00	0.00

Data not Submitted in Database

Employee Signature: _____ Date: _____

Supervisor Signature of Approval: _____ Date: _____

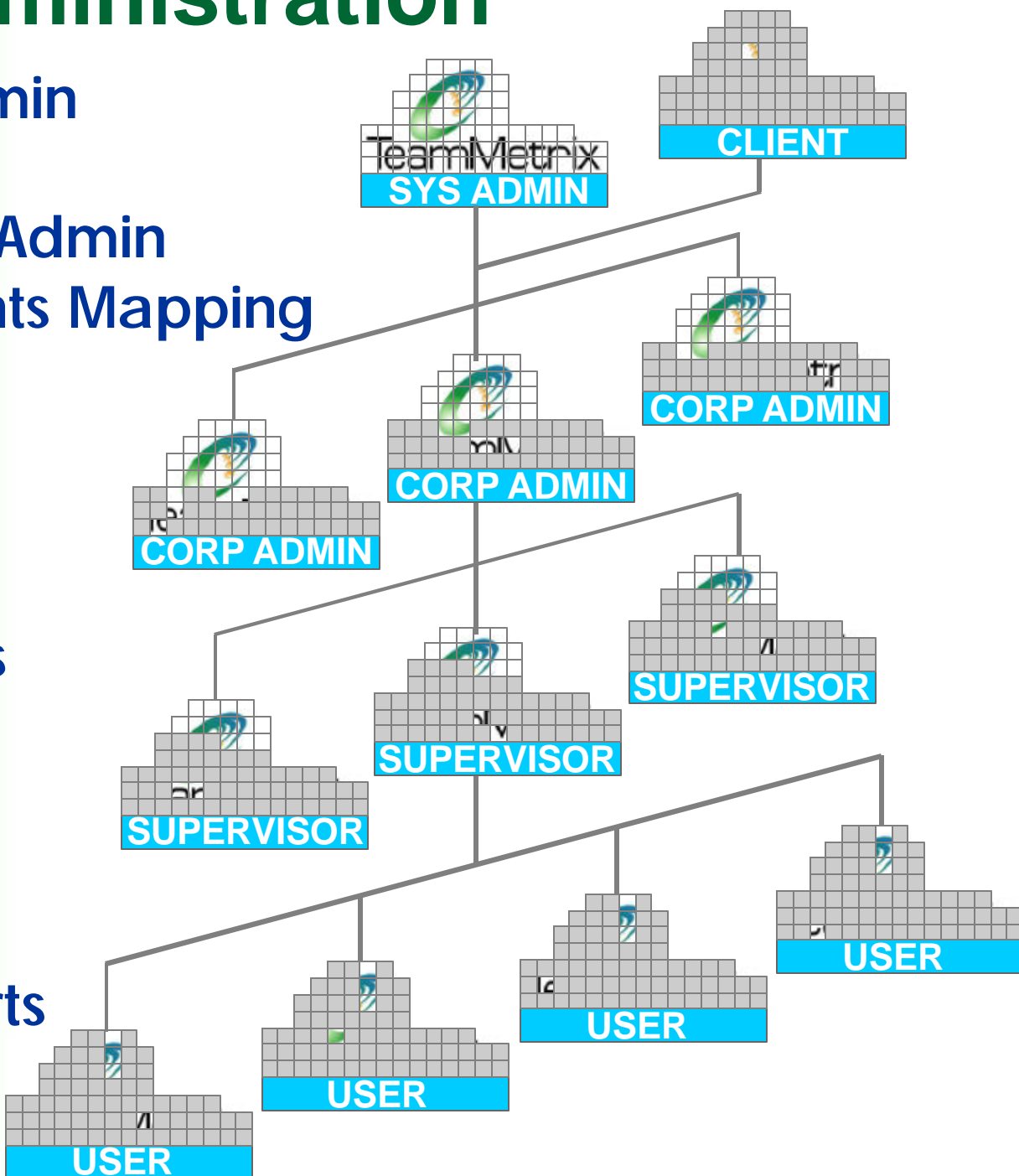
Comments:

PREPARE YOUR TIMESHEET ON A DAILY BASIS
FALSIFYING A TIMESHEET IS A CRIME



Administration

- Level 1: System Admin
Full rights
- Level 2: Corporate Admin
Chart of Accounts Mapping
Add/Edit Users
Corporate Rules
- Level 3: Supervisor
Approvals
Add/Assign Tasks
- Level 4: User
Timesheets
Vouchers
- Level 5: Client
Restricted Reports

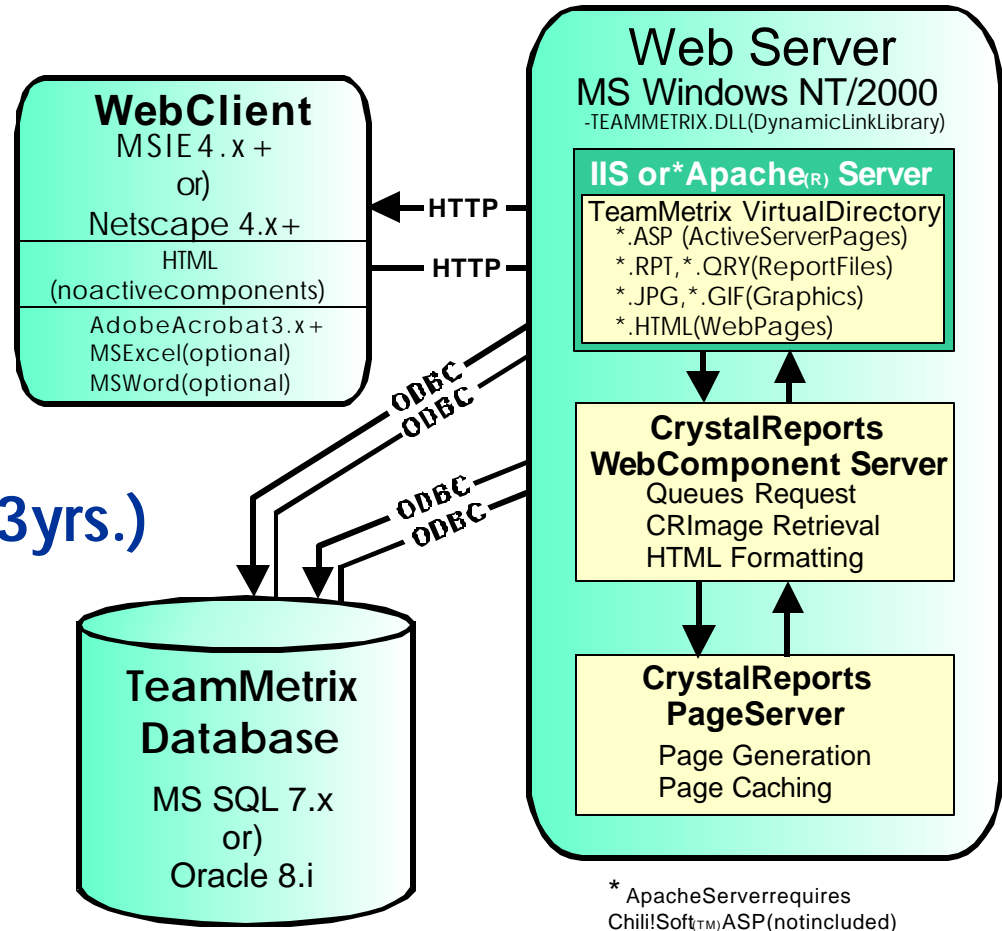




System Requirements

- **Server:**
 - MS Windows NT/2000(R)
 - MS SQL(R) 7.x+ or) Oracle 8.i+
 - 100MB per 1,000 users (3yrs.)

- **Clients:**
 - Netscape(R) 4.0+ or) MS IE(R) 5.0+
 - Acrobat Reader 3.0+
 - No Active Components Required!



* ApacheServerrequires Chili!Soft™ASP(notincluded)



Contacts

**TeamMetrix, Inc.
829 Park Ave., Suite 120
Baltimore, MD 21201**

**TEL: 1-866-TeamMet (toll free)
FAX 1-800-889-3560
sales@teammatrix.com
support@teammatrix.com
www.teammatrix.com**



TM

TeamMetrix

PROGRAM CONTROL SYSTEM REQUIREMENT

Background:

This requirement addresses the need for a program control system, hereafter referred to as “The System”, for government programs or prime contracts with multiple contractors/subcontractors (and/or multiple corporate divisions), each with disparate pay periods, pay rules, billing cycles, procurement and accounting practices.

Real-time cost reporting is typically unavailable to the Program Manager due to traditional accounting systems and methods that are dependent on pay period closings, subcontractor billing cycles, and vendor invoicing. Some full project life-cycles can be less than two weeks in duration while corporate accounting system cost data is typically not complete and available for 90-120 days, especially when multiple tiers of subcontractors are involved.

Typically, Program Managers do not have flexibility to add program activities or tasks in real time. The addition of a task or activity often requires contract and accounting system revisions to collect against the new requirement, and frequent flowdown subcontract modifications.

Many Program Managers (or customer organizations) address these problems by creating spreadsheets or a project control database to attempt to collect data in real-time. This significantly increases the need for project control personnel, software/database support, and adds a requirement for data entry duplication and reconciliation.

The successful bidder will provide The System to support real-time cost and performance management in complex Government/multi-contractor environments.

System Specifications:

Baseline Test:

Bidder must demonstrate that The System will readily support - *without modification* - the following three-day scenario at any point in a program’s operations.

Day 1: Insert and map new cost collection requirements (activities) to existing contract/subcontractor accounts.

Day 2: Collect labor, purchases and expenses against the new requirements.

Day 3: Generate Activity Based Costing reports including actual labor, procurement and expenses against the new requirements. Report must include staff, contractor and subcontractor data.

1/31/2002

Page 2

Feature Requirements:

The successful bidder must demonstrate that The System proposed supports each of the following requirements:

1. Web enabled labor, materials, task and expense (travel and expense vouchers) modules available to any user across multiple corporations and/or organizations
2. Designed for use on secure networks and through secure firewalls
 - 2.1. No Active Components (java applets, Active-X, etc.)
 - 2.2. Approved for use on US Gov't classified networks
 - 2.3. Support for X.509 Security Certificates
3. Section 508 Compliant (disability access)
4. Simultaneous support of Cost Plus, Fixed Price and T&M contract vehicles. System must support allocation of fixed costs by activity and usage
5. Flexibility to add activities, tasks and subaccounts without impacting corporate accounting systems
6. Simultaneous tracking of multiple corporations, each with their own implementation of multiple available pay rules all under a single database including
 - 6.1. Pay Periods
 - 6.2. Overtime Rules
 - 6.3. Time Increments
 - 6.4. Account Mappings
7. Proprietary data segregation/security features
 - 7.1. Multi-level System access control
 - 7.2. Isolate proprietary data from multiple contractors
8. Time Sheet and Payroll Downloads for optional use of The System as a universal accounting system front-end Paper timesheets with checksum for data integrity
 - 8.1. Electronic payroll and project downloads for various accounting/payroll systems such as Solomon®, PrimaVera®, CostPoint®, PeopleSoft®, Lawson® and ADP®
 - 8.2. Real-time Interface to MSProject® for tasking and assignments
 - 8.3. Labor Entry Audit ReportsSupport for real-time modifications of performance metric collection to facilitate changing environments
9. Audited and Approved for Use in Timekeeping by DCAA
 - 9.1. Supervisory record approval and locking
 - 9.2. Detailed audit trail of all manual System access
 - 9.3. Full Floor-Audit support
10. Support for indirect charges and charges to other programs
11. Purchasing and Other Direct Costs Modules
 - 11.1. Cost Estimates
 - 11.2. Travel Vouchers
 - 11.3. Expense Vouchers

1/31/2002

Page 3

- 11.4. Purchase Order/Requests
- 11.5. Final Price Adjustments
- 12. Project/Task Module
 - 12.1. Optional direct link to MSProject®
 - 12.2. Task data (estimates, start/end dates, description, etc.)
 - 12.3. Task assignment by organization, company and/or individual user
- 13. Corporate Module
 - 13.1. WBS to Corporate Account Translations
 - 13.2. Indirect Rate and Fee Applications
 - 13.3. Customized Time Sheets and Payroll Downloads
- 14. Personnel Module
 - 14.1. Organization and Positions
 - 14.2. Wage/Cost Histories
 - 14.3. Leave Management
- 15. Report Module:
 - 15.1. Report filtering and assignment capability to limit access to data by user.
 - 15.2. Real-time web access to actual data (next day) across multiple corporations, organizations or subsets therein including labor, materials, expenses (travel and expense vouchers) in multiple formats
 - 15.2.1. HTML
 - 15.2.2. PDF
 - 15.2.3. XLS
 - 15.2.4. DOC
 - 15.3. Program cost by period, WBS/Activity/Task, CLIN, fiscal year-to-date, and inception-to-date
 - 15.4. Staffing reports
 - 15.5. Financial analysis
 - 15.6. Project/task reports
 - 15.7. Work type/activity reports
 - 15.8. Client/funding organization reports
 - 15.9. Work Breakdown Structure reports
 - 15.10. Activity Based Cost reports
 - 15.11. Subcontractor summaries and invoice validation reports
 - 15.12. Program organization/segment reports

Support:

Contractor shall provide business management consulting, technical support, administrator and user training at levels to be defined.

1/31/2002
Page 4

Anticipated Results and Benefits:

The three most significant benefits anticipated through the successful acquisition and implementation of The System are (1) enhanced program management decision-making, (2) process improvement made possible through real-time performance measurement, and (3) real-time cost allocation support for Working Capital Fund and/or customer charge-backs. There are numerous other benefits of The System, many of which directly reduce operating expenses (see benefits marked with "\$"), including:

For Government/Prime Contractor Insight:

- On-line The System reports will provide insight to all direct labor charges across multiple contractors.
- \$- Flexibility of the The System will allow on-going changes to metrics collection in support of continual improvement goals without the need and expense of contractual action.
- \$- The capability to report across multiple contractors will save the Government or prime contractor weeks/months in waiting for contractor-generated financial reports and save the expense and effort of manually consolidating those reports.
- On-line The System reports will provide insight to task status and performance metrics

For On-Site Contractor and Process Improvement Managers:

- On-line The System reports will provide insight to task status and performance metrics
- \$- Flexibility of the The System will allow on-going changes to metrics collection in support of continual improvement goals without the need for corporate support.
- \$- Cost reports available to designated managers thereby providing critical data without the need to contact the corporate accounting department.
- Performance metrics and histograms facilitate planning and continual improvement.

For Corporate Support Managers (project control and indirect):

- \$- Direct queries of The System by Government and designated corporate managers will reduce/eliminate extensive scheduled and ad hoc financial reporting thereby reducing overhead costs.
- \$- The contractor's accounting system will not be required to incorporate dynamic on-site metric requirements thereby eliminating numerous changes to their accounting structures and preventing increases in overhead costs.
- \$- Contract modifications are reduced by the capability to use The System to track most new requirements thereby reducing overhead costs.

1/31/2002

Page 6

For Employees:

- The System capacity to produce corporate reports/timesheets will ease time reporting and reduce errors.
- Time keeping in The System is made a natural part of the work flow through use of the Task Module as opposed to a separate and often unrelated activity.
- Tasks are dispatched and readily available on-line at any terminal.